



CCG  
HOMES

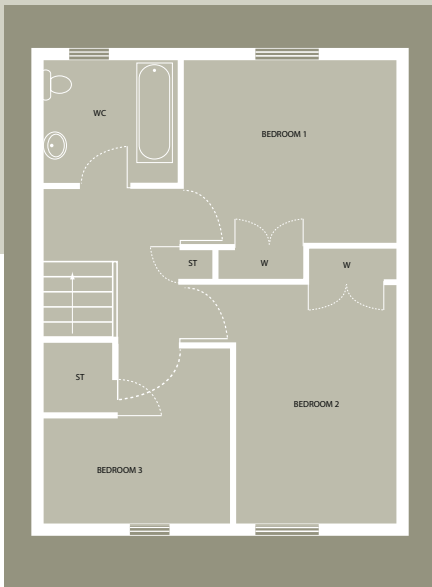
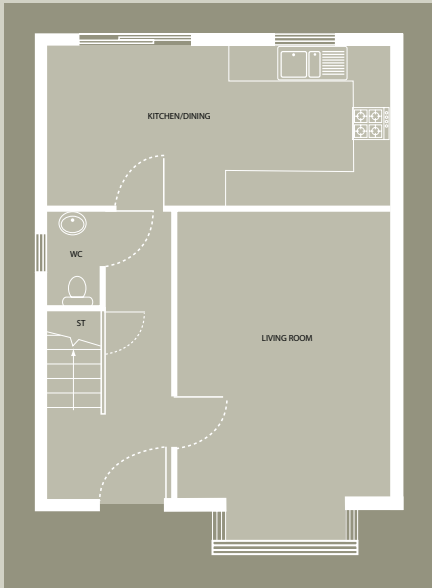
# The Peploe



**We have your vision of the future...**

3 Bedroom Villa

FLOOR PLANS



|                   |            |               |
|-------------------|------------|---------------|
| Lounge (into bay) | 3.6 x 5.5m | 11.8 x 18.0ft |
| Kitchen           | 5.2 x 2.6m | 17.0 x 8.5ft  |
| Bedroom 1         | 3.5 x 2.9m | 11.4 x 9.5ft  |
| Bedroom 2         | 2.6 x 3.9m | 8.5 x 12.7ft  |
| Bedroom 3         | 3.0 x 2.8m | 9.8 x 9.1ft   |
| Bathroom          | 2.1 x 2.0m | 6.8 x 6.5ft   |



The 'Peploe' is one of CCG Homes most popular home styles and features two double bedrooms and one single bedroom. The large bay windowed lounge and dining kitchen

provide plenty of space for a growing family to spread out and relax in peace! Patio doors from the dining room flood to space with light and energy.

**CCG HOMES**  
 11 Cambuslang Road, Glasgow G32 8NB  
 Tel: 0141 643 3797  
 Email: [info@ccg-homes.co.uk](mailto:info@ccg-homes.co.uk)  
[www.ccg-homes.co.uk](http://www.ccg-homes.co.uk)

Photographs, illustrations and dimensions are given for guidance only and we would advise that properties are physically measured although every care has been taken to ensure the accuracy of the content. We reserve the right to improve or change the specification and to vary the price quoted. The contents do not form part of or constitute a representation warranty or part of any contract.